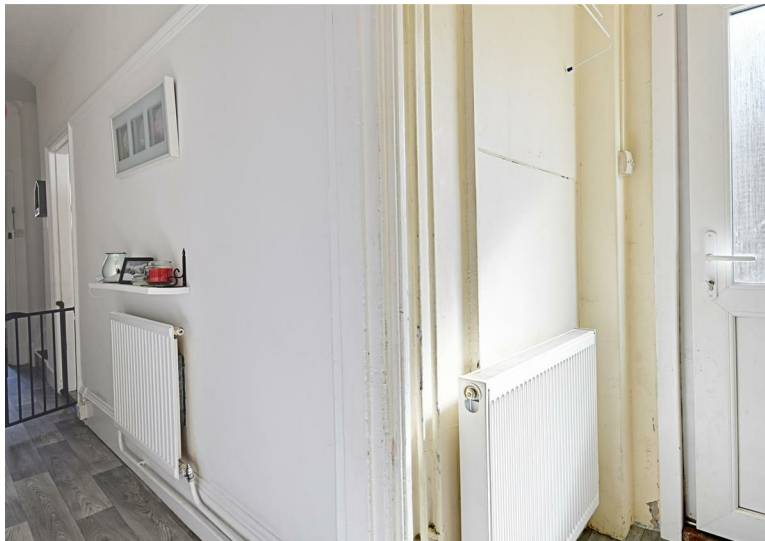


**RUSH
WITT &
WILSON**



**28b Salisbury Road, Bexhill-On-Sea, East Sussex TN40 2AD
£199,950**

*** Investment Buy To Let opportunity with tenant in situ, current rental £725 PCM * A two bedroom terraced house, gas central heating system, double glazed windows and doors, private front and rear gardens, share of freehold, viewing comes highly recommended by RWW Bexhill.**



Communal Entrance Hallway

With entrance door.

Private Entrance Hallway

Single radiator.

Living Room

14'9" x 9'9" (4.50m x 2.97m)

Single radiator, bay window to the front elevation, feature fireplace, under stairs storage cupboard.

Kitchen

12'7" x 9'4" (3.84m x 2.84m)

Window to the rear elevation, fitted kitchen comprising a range of base and wall units with laminate straight edge worktops, one and half bowl single drainer sink unit with mixer tap, space for fridge/freezer, space for cooker, single radiator.

Utility Lobby

Double radiator, door leading out to rear garden, plumbing for washing machine, space for tumble dryer, wall mounted gas central heating and domestic hot water boiler, window to side.

Bathroom

Suite comprising panelled bath, walk in shower with chrome controls, chrome showerhead and fixing, wc with low level flush, pedestal wash hand basin, tiled splashbacks, tiled floor, double radiator, window to the rear and side elevations.

First Floor Landing**Bedroom One**

13,3" x 11'9" (3.96m,0.91m x 3.58m)

Two window overlook the front elevation, single radiator, original Victorian fireplace, built in wardrobe cupboard.

Bedroom Two

10'8" x 11'4" (3.25m x 3.45m)

Window to the rear elevation, built in wardrobe cupboard, original Victorian fireplace.

Outside**Rear Garden**

Southerly facing, mainly shingled for low maintenance, all enclosed by fencing to all sides, timber framed shed.

Lease

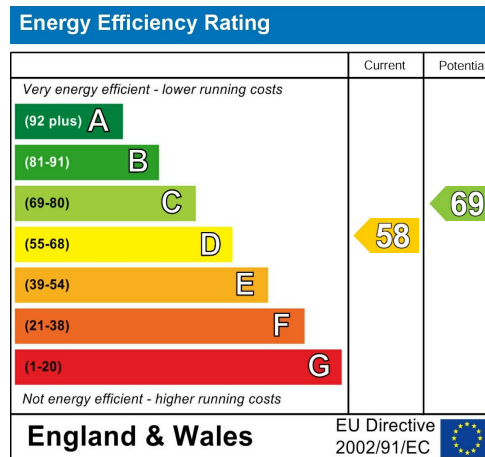
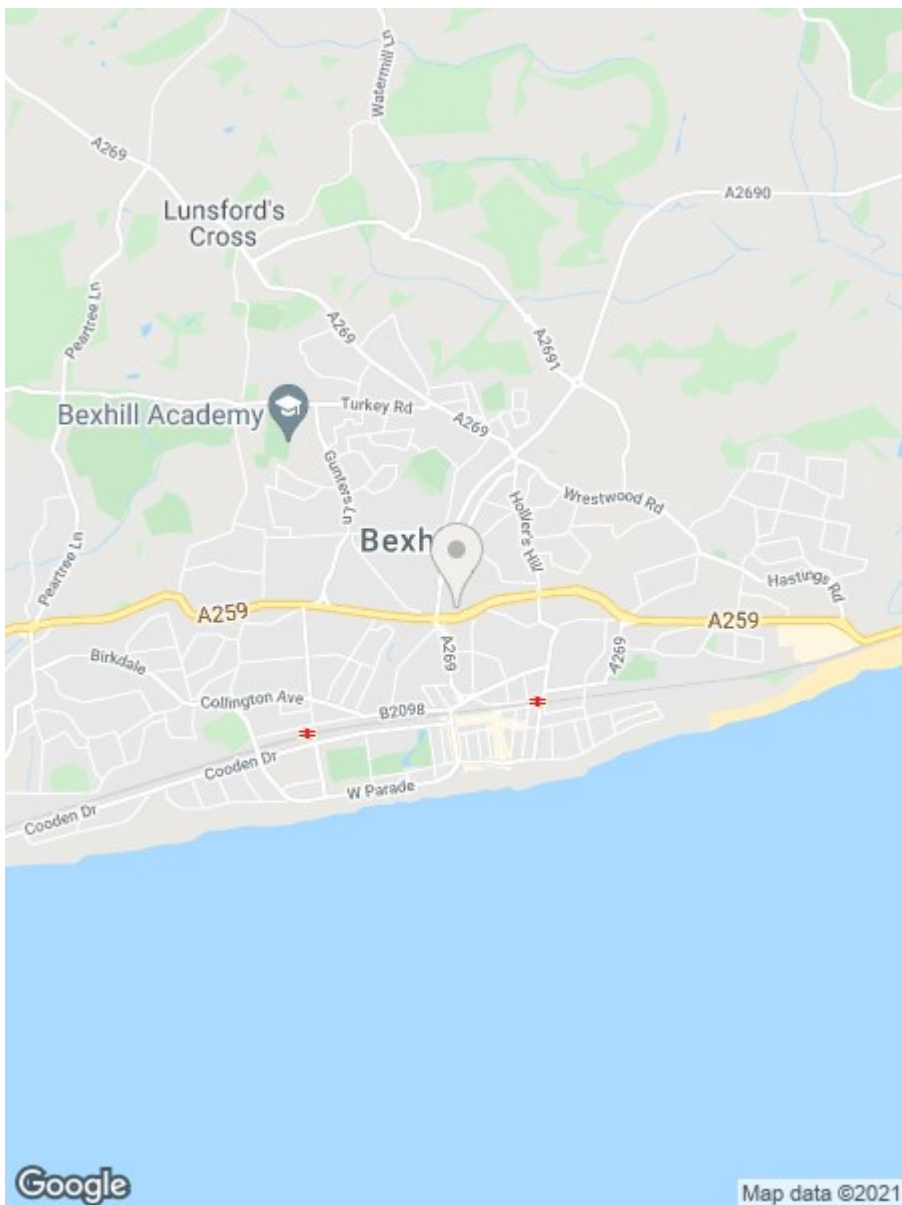
Lease hold property with Share of Freehold.

Agents Note

None of the services or appliances mentioned in these sale particulars have been tested. It should also be noted that measurements quoted are given for guidance only and are approximate and should not be relied upon for any other purpose.







**RUSH
WITT &
WILSON**

**Residential Estate Agents
Lettings & Property Management**



**3 Devonshire Road
Bexhill-on-Sea
East Sussex
TN40 1AH
Tel: 01424 225588
bexhill@rushwittwilson.co.uk
www.rushwittwilson.co.uk**